
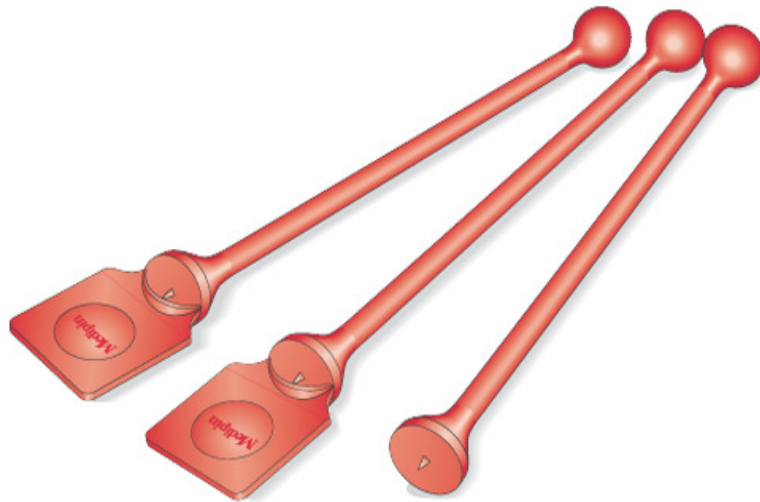


Clinician: get straight to the point, **always** insist on

Jacobs **Medipin**[®]

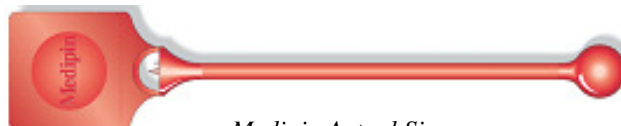
Single Use Protected Neurological Pin 

The standard to be judged by for
safer, consistently precise diagnosis, offering **greater accuracy, security and convenience.**



Advantages of this single use cutaneous sensation instrument

- **EASIER TO USE**
- **SUPERIOR TEST SENSITIVITY & RELIABILITY**
- **BETTER INFECTION CONTROL**
- **COST EFFICIENT**



Medipin Actual Size

For further information on clinical applications or to purchase Medipin please
call **+44(0)780 1986 515** or visit **www.medipin.net**

Medipin is a patented single-use precision instrument designed to promote best practice

- **Consistency of Stimulation** - A protected point offers standardised depth of penetration
- **Sensitivity** - and augments pinprick acuteness by creating a neural 'center surround' field effect
- **Safety** - It demands less testing pressure and reduces risk of unwanted breach of delicate skin
- **Infection Control** – whilst seeking to confine penetration and avoid self inflicted 'needle-stick' injury
- **Disposability** - The point is made safe by simple manual compression against a hard surface

Instructions for Use

1. **BREAK TAB** TO EXPOSE POINT - AVOID CONTACT WITH FINGERS.
2. **GRASP DEVICE** BETWEEN THUMB and INDEX FINGER LIGHTLY ENOUGH TO PERMIT SLIGHT AXIAL SLIPPAGE IF REQUIRED - UTILISE TEXTURED SURFACE TO FACILITATE CONTROL.
3. **APPLY TO SKIN AT A PERPENDICULAR TO STANDARDISE POINT PRESSURE FOR IMPROVED TEST CONSISTENCY** and OPTIMISE ANNULAR CONTACT TO GENERATE A 'CENTRE SURROUND' FIELD OF ENHANCED ACUITY. **PRESS FIRMLY BUT CAREFULLY** MAKING SEVERAL QUICK APPLICATIONS AROUND THE SAME LOCALITY USING A REPETITIVE,

PERCUSSIVE CONTACT TO ESTABLISH AN 'AVERAGE' STIMULATION LEVEL.

AVOID HIGH AMPLITUDE or 'STABBING' ACTIONS - PENETRATION IS CHECKED BY THE ANNULUS BUT NEVER ASSUMED 'IMPOSSIBLE'

4. **COMPARE REGIONS OF SENSORY DISTRIBUTION** CONTINUOUSLY and SYMMETRICALLY WHERE POSSIBLE.

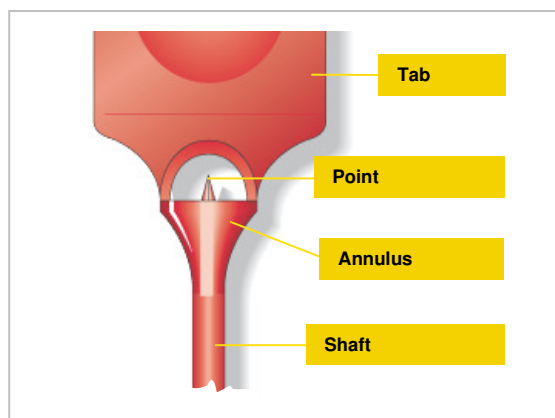
5. TO PREVENT RE-USE **DESTROY POINT** BY COMPRESSION AGAINST A HARD SURFACE and/or DISPOSE OF IN A BIOHAZARD CONTAINER.

ALWAYS OBSERVE SHARPS POLICY

Medipin represents a unique, dedicated single-use precision technology designed to enhance the diagnosis of cutaneous sensory loss. The instrument consists of a short faceted point, acutely delineated by its surfaces and edges and inclined to stretch rather than penetrate the skin surface, within an annular apparatus that encircles the point with a perimeter of dull stimulation. By stretching the skin and contrasting the sharp stimulus of this highly demarcated point with that of the annulus, it is possible to emphasize the

neurological phenomenon of **Lateral Inhibition** where functional connections are formed in the central nervous system to highlight differences between areas of sensation. Each application generates a focussed and well-defined '**Center Surround**' field effect, which augments the acuity of pinprick. It is best employed using a continuous, repetitious technique, between symmetrical regions where possible, allowing the patient to express subtle, quantitative degrees of sensory loss by comparison rather than only the 'all or nothing' option achieved by sharp/blunt testing.

- **Employ the right test**
- **Perform the optimum technique**
- **Choose the best instrument**



Medipin has been approved by:

- Massachusetts Institute of Technology, USA
- Dept of Neurophysiology, National Hospital for Neurology and Neurosurgery, UK
- Cornell University Medical College, New York, USA
- New York University Medical Centre, New York, USA

Medipin is available from

The American Academy of Neurology Store

Supplied in cartons of 100 Medipin contains no metal components and offers virtually an infinite shelf life

Protected by Patents Including:

US Patent No. 5511555, US Patent No. D369861

European Patent No. 93904280.0

FDA device Listing No. E205511

Manufactured in the UK

For further information on clinical applications or to purchase Medipin please call **+44(0)780 1986 515** or visit **www.medipin.net**